



B&B Hotel

Longwy - France

THE PROJECT

«Welcome home!» These two words are used to offer a warm welcome to all guests when entering any B&B Hotel.

The hotel chain called on Plafometal to design several ceiling solutions for its new hotel in Longwy, straddling the Belgian, French and Luxembourg borders, that would embody the company's philosophy and ongoing pursuit for comfort.

THE CUSTOMER'S REQUIREMENTS

- Superior acoustic comfort to ensure privacy and confidentiality.
- Stylish solution reflecting the new brand image.

OUR RESPONSE

Plafometal proposed a stylish self-supporting panel offering superior acoustic comfort and easy installation, engineered to adapt to the specific features and constraints of each space, such as lobby, corridors, entrance to the 75 rooms and bathrooms.

Installed between wall angles, the 300 mm-wide panels were delivered in lengths specifically tailored to the building (between 900 and 2,500 mm). Each panel featured overlapping edges. Two versions of the PM3 product were installed in the B&B Hotel to satisfy customer's acoustic requirements:

- A version with an 11% perforation design ($\varnothing 1.5$ mm) filled with a thermal-bonded acoustic fleece (ALPHA offer: acoustic absorption $\alpha_w=0.80$).
- A non-perforated version.

All panels were delivered in 137 white color.

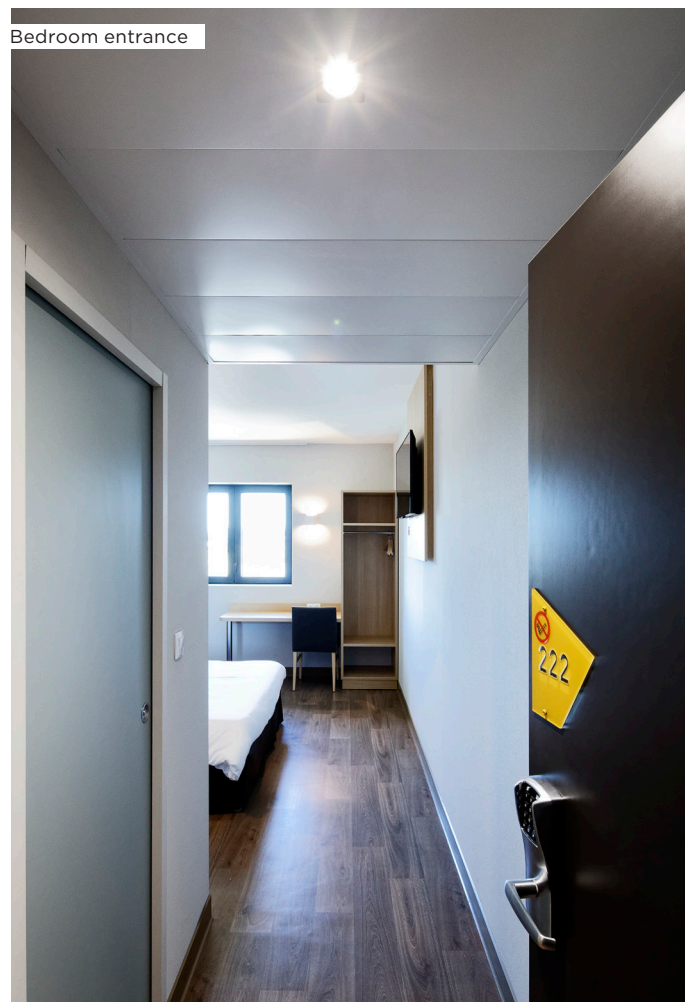
These products have been used for similar applications in other hotels.

PM3 PANELS

- Designed to be installed on an exposed grid.
- Panels have overlapping joining edges and sharp or beveled angles.

KEY PRODUCT FEATURES:

- Acoustic absorption up to $\alpha_w 0.85$ for perforated panels filled with a Plafometal fleece.
- Easy to disassemble by simply lifting the panel to offer complete access to the plenum.
- Adaptable lengths to suit requirements and adaptable widths for flexibility.
- The overlap reduces the risks of light leakage and help level elements.
- Can be equipped with different folded ends for greater lateral rigidity and adapted to most grids.





SURFACE AREA: 800 m²

CITY: Longwy

COUNTRY: France

PREMISES: Lobby, corridors, bedroom entrances and bathrooms

INSTALLATION DATE: 2017

CONTACTS

- **Project Manager:** Manuel Esteves
- **Building Owner:** Manuel Esteves
- **Installation company:** SV BAT
- **Technical Sales Manager:**
Jean-Luc Barzasi : +33 6 07 19 53 74
jean-luc.barzasi@saint-gobain.com



www.plafometal.com

Route de Phades
08800 Monthermé, France
Tel: +33 (0) 3 24 59 54 00
Fax: +33 (0) 3 24 59 54 01

A Saint-Gobain brand

PLAFOMETAL