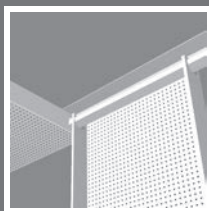


INSTALLATION GUIDE FOR FIRE-RESISTANT* ORIAL PANELS



This fitting procedure will enable you to prepare and easily fit your Plafometal metal ceiling.

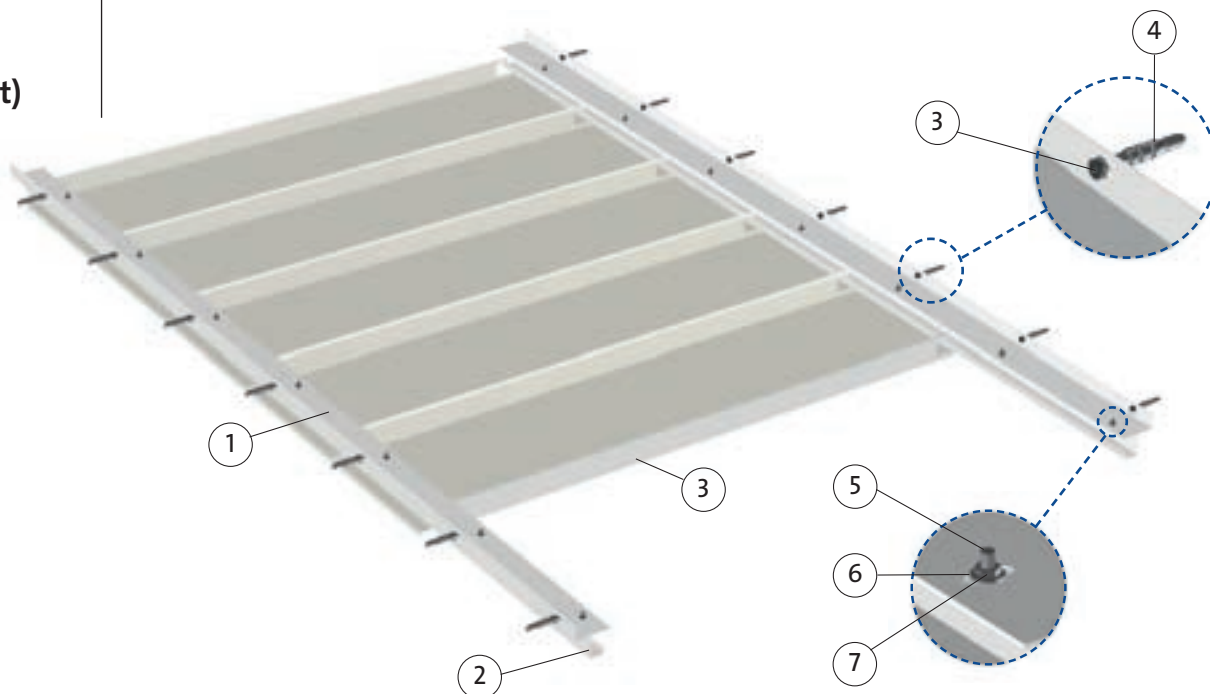
Please contact us and refer to the Fire Resistance Report prior to installation.

*Fire-resistant according to French standards.

RANGE

SWING-DOWN PANEL SYSTEM ON BOTH SIDES
PLAFOMETAL-CC-120
 Installation in passageways

ORIAL
 (Fire-resistant)



BILL OF MATERIALS PER LINEAR METER

Illustration	Mark no.	Description	Quantity / lm
	1	HINGED ORIAL FS WALL ANGLE 30 x 70 mm Length: 3,000 mm, thickness 1 mm	2 lm
	2	ORIAL FS PROFILE Length: 3,000 mm, thickness 1 mm	2 lm
	3	SCREW M6 x 60 mm	6.7 units
	4	HILTI HUD-L ANCHOR	6.7 units
	5	SCREW M6 x 10 mm	6.7 units
	6	WASHER	13.3 units
	7	NUT M6	6.7 units

Unless otherwise specified, all dimensions are in millimeters (mm).
 Please contact us and refer to the Fire Resistance Report prior to installation.
 Each step includes a diagram, tips and the tools used.

PLAFOMETAL

FITTING PROCEDURE

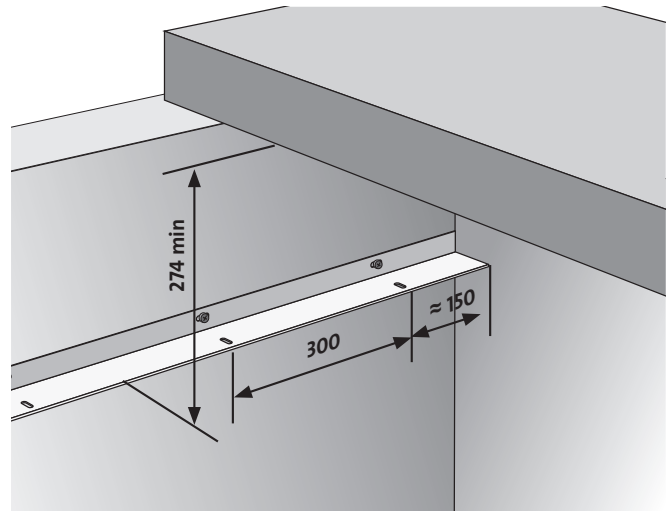
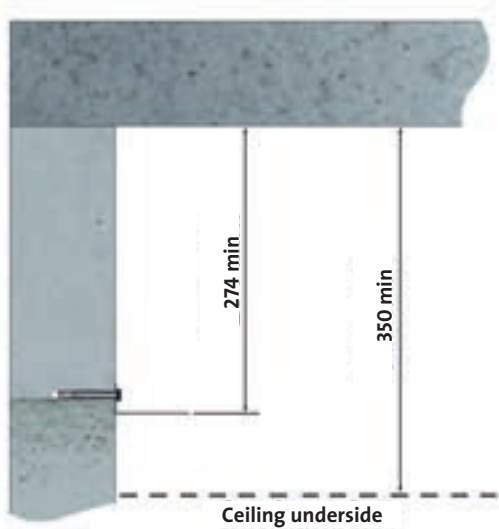
Fire-resistant ORIAL

1 INSTALLING THE PERIMETER PROFILES

► The Orial suspension system is installed in two stages.

1) ORIAL WALL ANGLES

Fix the 30 x 70 mm wall angles to the concrete walls with plastic anchors (such as HILTI HUD-L anchors), M6 x 60 mm screws + washers every 300 mm.

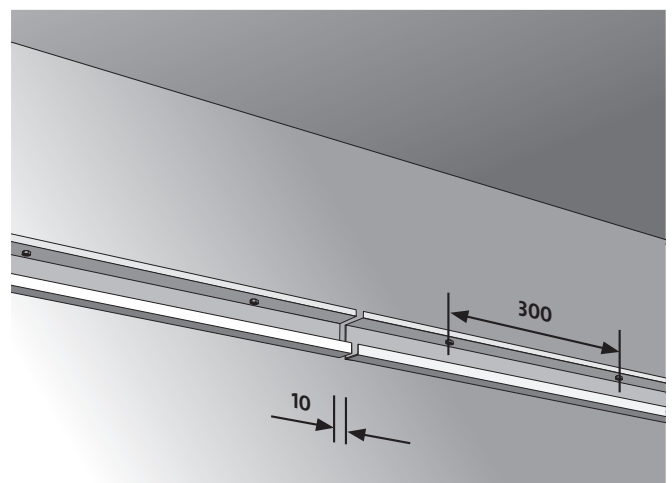
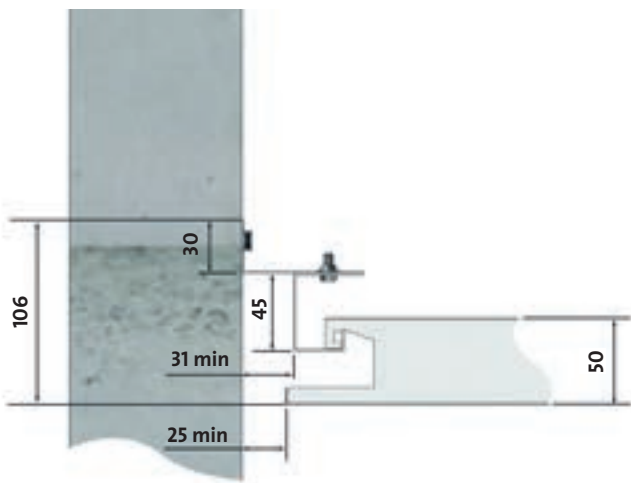


2) HINGED PROFILES

Then fix the hinged profiles (40 x 45 x 29 x 12 mm) beneath the wing of the perimeter wall angles with bolts + M6 x 60 mm screws + washers every 300 mm in the oblong holes.

i TIPS:

► Adjust the profiles so that there is a hollow joint of at least 31 mm, which will ensure a hollow joint of at least 25 mm between the panel and the wall.



- Allow for a 10 mm expansion gap between two hinged profiles.
- The hinged profiles are abutted against the walls.

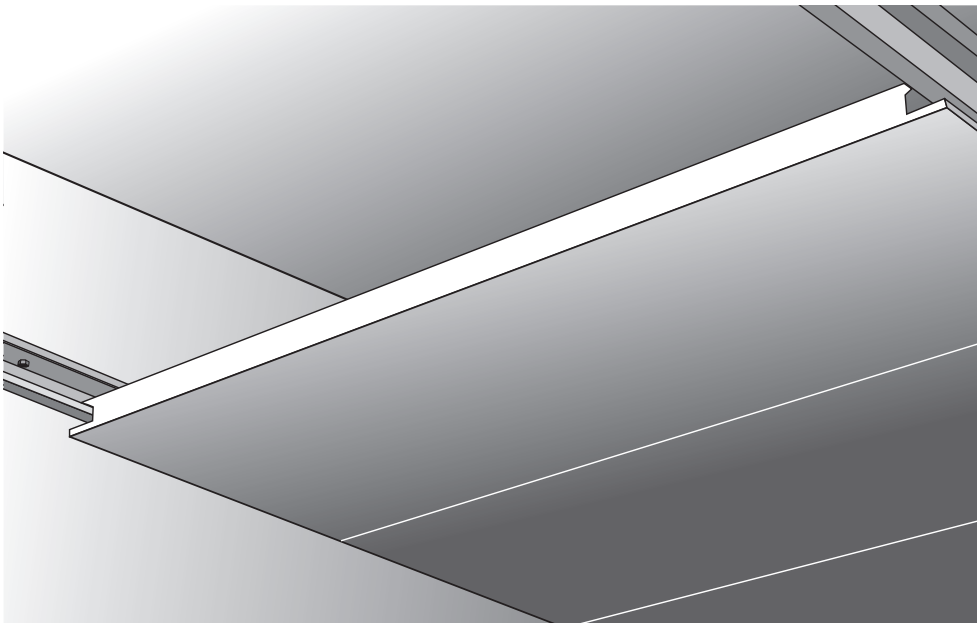
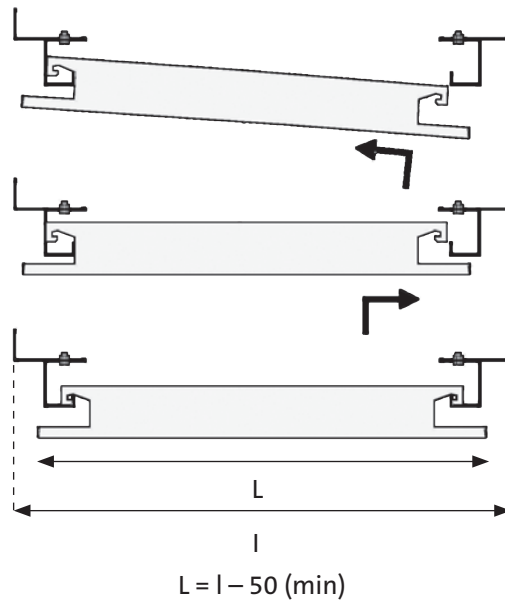
Unless otherwise specified, all dimensions are in millimeters (mm).

FITTING PROCEDURE

Fire-resistant ORIAL

2 INSTALLING THE ORIAL PANELS

- Hang the ORIAL panels from underneath and onto the hinged profiles. Panels are installed edge-to-edge without any gaps.



i TIP:

- The length (L) of the panels must match the width (l) of the corridor less 50 mm (minimum) so that panels can swing down when opened.

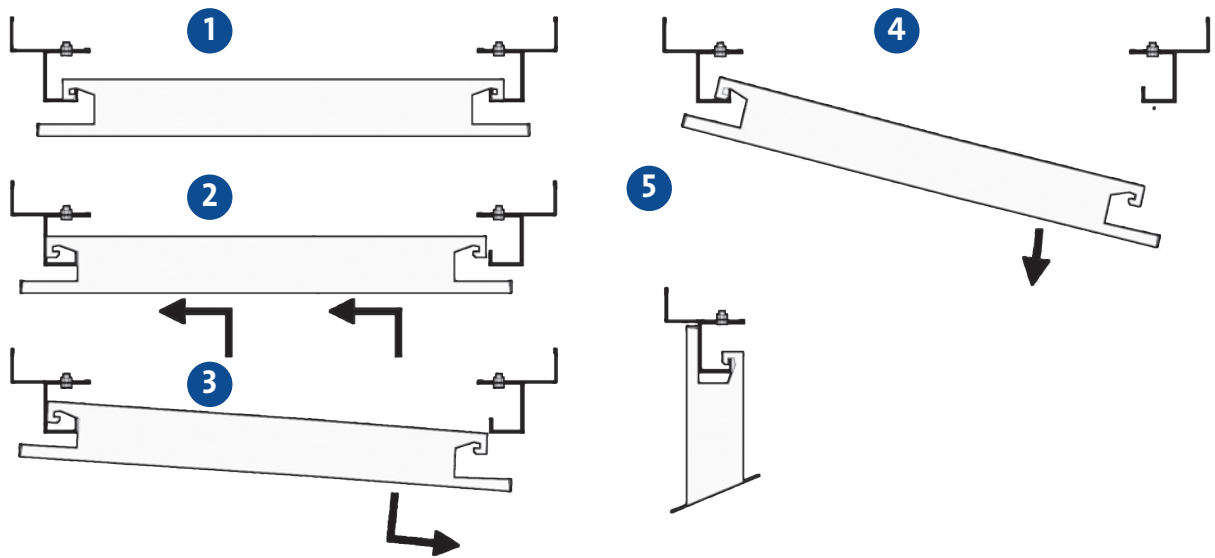
Unless otherwise specified, all dimensions are in millimeters (mm).

REMOVAL PROCEDURE

Fire-resistant ORIAL

3 ACCESSING THE PLENUM: OPENING THE PANELS

- ▶ Push an ORIAL panel upwards ① and slide sideways ② to release it from the hinged profile ③.
- ▶ The ORIAL panel swings down ④ and remains suspended on the opposite profile ⑤.
- ▶ To replace the panel, proceed in reverse order while ensuring that the panel is correctly positioned so that each element is aligned with the next.



APPENDIX

Fire-resistant ORIAL

STORAGE

All our products must be stored on edge, on a flat surface and in a dry place away from inclement weather and the risk of impacts.

CARE / CLEANING

Our ceilings only require minimal maintenance. Various types of cleaning methods can be used:

- ▶ To remove dust, use a soft brush or vacuum cleaner with a non-abrasive nozzle.
- ▶ To remove pencil or similar marks, simply use an eraser.
- ▶ In case of grease stains, use a cloth slightly dampened with a surfactant, taking care not to get the insulation material wet.
- ▶ For other stains or dirty marks, use a damp cloth or sponge, taking care not to get the insulation material wet.

Never use abrasive products.

When using chemicals, always test on a concealed part of the ceiling.

Contact us before using disinfectant solutions.

ON-SITE CUTTING

The ceiling should not support any loads other than its own weight. Various fixtures (lighting, air vents, speakers, signs, etc.) can be fitted to the building's primary or secondary structure using hangers passing through the ceiling with the smallest possible gap.

The secondary structure must then be verified at elevated temperatures through testing or design calculations according to applicable standards relating to the CSTB Fire Resistance Report.



APPENDIX

Fire-resistant ORIAL



PLAFOMETAL

Route de Phades - 08800 MONTHERME
Tel: +33 (0)3 24 59 54 18 - +33 (0)3 24 59 54 25
Email: contact.plafometal@saint-gobain.com
www.plafometal.com